

ENGINE POWERED TELESCOPIC BOOM LIFTS

TB860J PLUS

Compliant with ANSI/CSA standards

PRODUCT HIGHLIGHTS

Plus Series High Capacity

■ Carry up to 3 occupants, materials, and tools with max platform capacity of 1,000 lb

Robust Design

■ Heavy-duty steel construction and reinforced steering linkage provide unmatched durability and reliability

Intelligent Maintenance

■ Industry-leading 7-inch color screen and OTA functionality, providing the technicians with convenient access to live machine and maintenance information



Standard Features		
Automatic Platform Leveling	7" Color display screen	Dual-speed drive motor
Platform 160° hydraulic rotation	Safety controller	Patented anti-slip system by flow divider/combiner valve
Drive enable system	Fault diagnosis system	Foam-filled tires
Fully proportional joystick controls	Swing-out engine tray	4-wheel brake
Horn and buzzer alarms	Engine restart protection	Emergency brake release
Flashing beacon	Engine malfunction automatic shutdown	4WDx2WS
Tilt protection	AC power to the platform	Full-time oscillation front axle
Overload sensing system	Emergency stop system	360° continuous turntable rotation
Max allowable inclination up to 5°	Auxiliary emergency lowering system	Hydraulic cylinder protection covers
Optional Features		
4' 9" (1.45m) work platform	Hydraulic generator	Telematics
6' (1.83m) work platform	Overhead anti-collision device	Platform work lights
8' 1" (2.44m) swing type tri-gate platform	Anti-crush device	Solid non-marking tires
Foam-filled non-marking tires		

SINOBOOM™
— NORTH AMERICA

PARTNERS IN ACCESS™

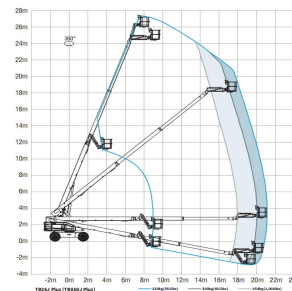
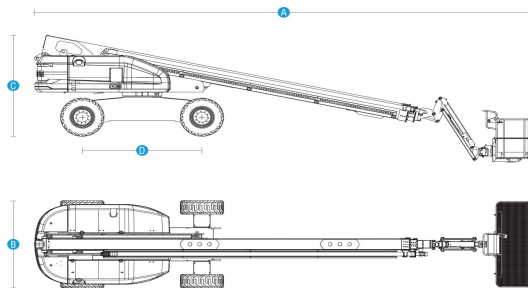
SINOBOOM.US | INFO@SINOBOOM.US
105 W RILEY ROAD, HOUSTON TX 77047

ENGINE POWERED TELESCOPIC BOOM LIFTS

TB860J PLUS

Compliant with ANSI/CSA standards

Model	TB860J Plus
Dimensions	
Max Working Height	92' 3"(28.1m)
Max Platform Height	86' 3"(26.3m)
Max Horizontal Extension(Restricted/Unrestricted)	58' 9"(17.9m)/65' 7"(20m)
A-Length Stowed	41'(12.5m)
B-Width Stowed	8' 2"(2.49m)
C-Height Stowed	9' 5"(2.88m)
D-Wheelbase	9' 10"(3m)
Ground Clearance	1' 6"(0.46m)
Platform Dimensions(LxWxH)	8' x 3' x 3' 7"(2.44mx0.91mx1.1m)
Performance	
Platform Capacity(Restricted/Unrestricted)	1,000lbs(454kg)/661lbs(300kg)
Platform Occupants(Restricted/Unrestricted)	3 persons/2 persons
Turntable Rotation	360° Continuous
Platform Rotation	160°
Drive Speed - Stowed	3mph(4.8km/h)
Drive Speed - Raised	0.68mph(1.1km/h)
Gradeability (4WD)	45%
Turning Radius (Inside/Outside)	12'(3.65m)/22' 8"(6.91m)
Wind Resistance	28mph(12.5m/s)
Turntable Tailswing	4' 9"(1.45m)
Tilt Rating	5°
Drive x Steer	4WDx2WS
Tire Size/Type	385/65-22.5 (Foam filled)
Power	
Engine	Cummins QSF2.8t3TC72, 54kW, Tier 3 / EU Stage 3A Deutz TD2.9 L4, 55.4kW TF4, US EPA
Hydraulic Tank Capacity	44.9 gal (US)(170L)
Fuel Tank Capacity - Diesel	42.3 gal (US)(160L)
System Voltage	12V DC
Hydraulic System Pressure	28 MPa
Weight	
Weight	37,479lbs(17,000kg)



SINOBOOM™
NORTH AMERICA

PARTNERS IN ACCESS™